

# One platform, many partners

The British Library's shared research repository as service for cultural and research organisations

Dr Torsten Reimer

Head of Content and Research Services

[Torsten.Reimer@bl.uk](mailto:Torsten.Reimer@bl.uk) / [@torstenreimer](https://www.instagram.com/torstenreimer)

<http://orcid.org/0000-0001-8357-9422>

Von Open Science zu Citizen Science: Openness  
und Kunst- und Museumsbibliotheken,  
Online, 10<sup>th</sup> December 2021



# The BL (open access) repository service

The British Library offers a repository service in the following flavours:

1. **Individual repositories** with own branding
2. Several repositories connected through a **shared discovery layer**
3. A single repository used **collaboratively** by several organisations

We are offering this as a **trusted public sector organisation** whose existence is guaranteed by UK law. The service is built on **open source software** and deployed in a **partnership model** at sustainability and not at financial profit.

Furthermore, we are not just offering a barebones repository but we use the platform ourselves, and we keep investing in it and enriching it with the **experience of a world-leading research library**.

Delivered with our technical partner CoSector (part of the University of London).

Currently, the service is tailored to **cultural organisations like museums**.

# Where we started from

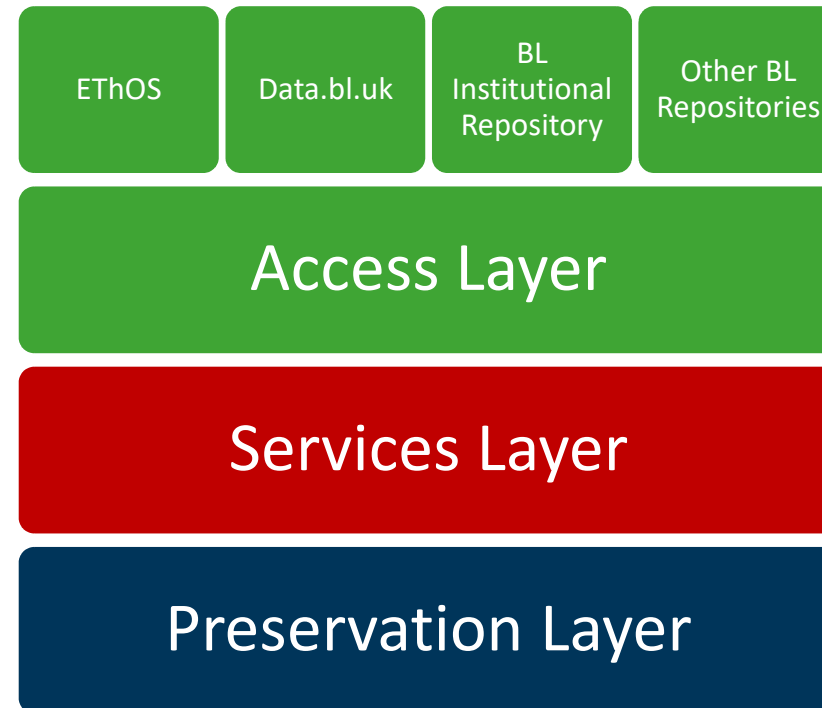


# Plans for BL repository platform

Consolidate aging repositories on a single platform

Refresh the petabyte-scale preservation system for the national collection

Build an access layer that allows us to easily spin up multiple repositories



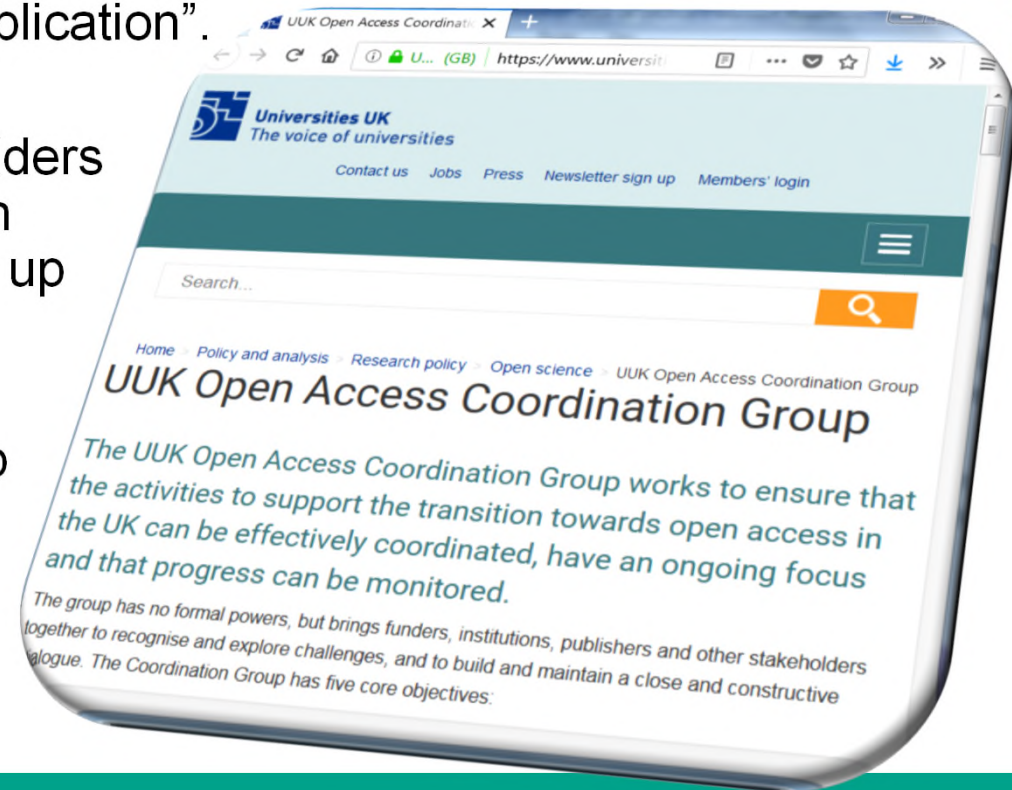


# Repositories as national concern

A (2016) [independent report on open access](#) published by the Department for Business, Innovation & Skills asked us “to ensure that there is at least one permanent copy of an open access publication”.

The [Universities UK Open Access Coordination Group](#), involving stakeholders such as government, funders, research organisations, publishers, libraries, set up a working group to look into the recommendations.

Meetings throughout 2017, a workshop at the British Library and a survey of repository managers across UK universities were conducted.



# Challenges, (not just) for the UK

1. Concerns about sustainability of the underlying repository software package
2. Difficulties with CRIS system integration
3. Difficulties with integration with university systems (other than CRIS)
4. Difficulties with maintaining custom functionality
5. Issues with changing publisher and/or funder policies changing compliance status of articles
6. Lack of integration with identifiers (such as ORCID or DOIs)
7. Limitation of reuse through deposit licence ('all rights reserved'), e.g. for text and data mining
8. Limited/no facilities (such as API) to support text and data mining
9. Linking publications to related datasets (and vice versa)
10. Linking publications to relevant funders
11. Management effort for journal embargoes
12. No or limited preservation functionality
13. Not enough resource to update from older/out-of date version of repository software
14. Not enough staff resource for operational management
15. Reporting facilities not sufficient for funder reporting
16. Reporting facilities not sufficient for internal reporting
17. Technical support: lack of skills / capability
18. Technical support: not enough capacity
19. Tracking/integrating AAMs deposited in subject/other institutional repositories (REF OA policy)
20. Usability and user interface issues

# IRO C

Independent Research Organisation Consortium  
for the arts and humanities

[Home](#)   [BFI](#)   [The British Library](#)   [Historic England / English Heritage](#)   [British Museum](#)  
[Historic Royal Palaces](#)   [Historic Environment Scotland](#)   [Imperial War Museums](#)  
[Museum of London Archaeology](#)   [The National Archives](#)   [National Portrait Gallery](#)  
[The National Gallery](#)   [National Maritime Museum](#)   [National Museums Scotland](#)  
[National Museums Wales](#)   [Royal Botanic Garden Edinburgh](#)   [Royal Botanic Gardens Kew](#)  
[Science Museum Group](#)   [Tate](#)   [Victoria and Albert Museum](#)



**We are a network  
of museums,  
galleries, libraries  
and other UK  
heritage  
organisations**

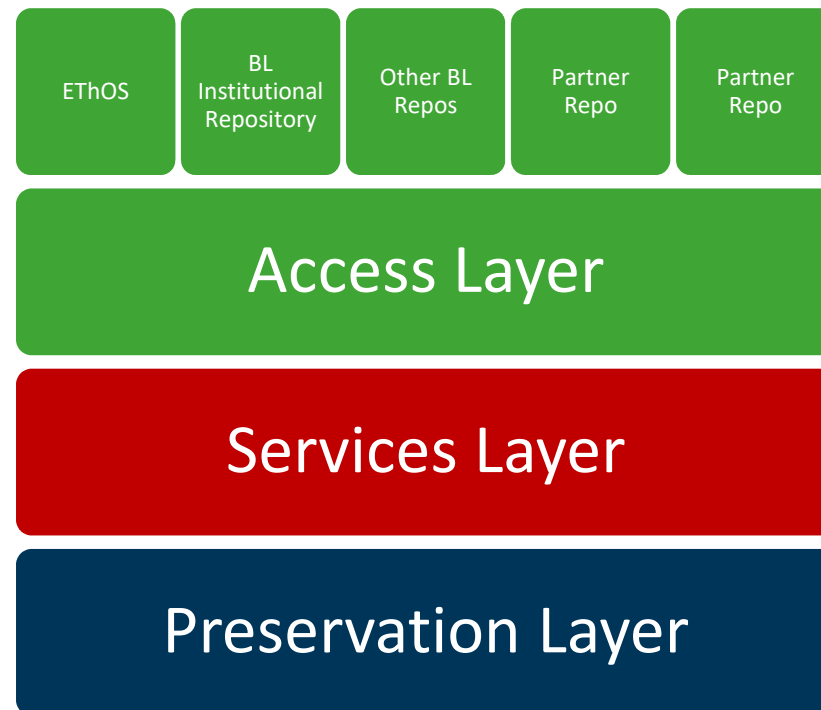
# Expanded plans for the repository platform

Consolidate repositories on a single platform

Refresh the petabyte-scale preservation system for the national collection

Build an access layer that allows us to easily spin up multiple repositories

Host partner repositories on the same platform





# Built in Samvera Hyku



- Open source, community built
- Allows multiple tenant repositories hosted on a single repository instance
- British Library actively contributing to future developments

# Repository features

- 60+ 'Resource type' descriptors, including journal article, dataset, image, software, exhibition items, blog, guidelines, policy report, leaflets & newsletters
- View image works (e.g. leaflets) on screen using Universal Viewer
- Funder details captured via integration with Funder Registry
- DOI look-up enables auto-population of new works
- Integration with Datacite allows DOIs to be created on deposit
- Also includes other identifiers such as ORCID, ROR and ISNI
- A shared model can allow multiple organisations to deposit and manage combined content in a single repository

# Shared Repository pilot



# Shared research repository

The screenshot shows the homepage of the Shared Research Repository. On the left, a grey sidebar contains the title "Shared Research Repository for cultural and heritage organisations" and a welcome message. The main content area features a search bar at the top right, a list of partner repository logos (MOLA, National Museums Scotland, British Library, Kew, TATE, and The British Museum), and a footer with an "Admin" link, a "Zotero" button, and the URL "https://iro.bl.uk".

**Shared Research Repository**  
for cultural and heritage organisations

Welcome to our shared repository where you'll find research produced by staff of the British Library and our current partner organisations: the British Museum, MOLA (Museum of London Archaeology), National Museums Scotland, Royal Botanic Gardens Kew, and Tate.

Visit one repository at a time, or use the search box to search and explore publications, reports, datasets and papers from across our combined content.

Explore Our Research Repository

Browse our partner repositories:

- MOLA
- National Museums Scotland
- BRITISH LIBRARY
- Royal Botanic Gardens Kew
- TATE
- The British Museum

Admin

Zotero

<https://iro.bl.uk>

Managed by the British Library  
Provided by Notch8 & CoSector

# Cultural heritage shared repository

## Repository features:

- Separate Hyku repositories on a single instance
- A shared search layer to connect all content

## Service features:

- Partners have their own repository, own content, own workflows
- Each partner has its own branding, logo – and unique URL
- They have strong identities, users understand each org's mission
- Partners benefit from British Library repository and content expertise



# Example: exhibition content type

EXHIBITION

## Wild and Majestic: Romantic Visions of Scotland

National Museums Scotland [\(ISM\)](#)

2019


Universal Viewer

### Abstract

Dramatic highland landscapes, heroic histories, tartan and bagpipes are among the defining images of Scotland for many centuries. This exhibition considers the origins of these ideas and explores how they were used to represent Scotland around the world. From the 18th century to Queen Victoria's highland idyll at Balmoral, Wild and Majestic considers the origins of these ideas and explores how they were used to represent Scotland around the world, expressed through highland and military dress, royal visits, art, literature and the beginnings of the iconic objects, this landmark exhibition charts Scotland's journey into the global imagination and invites you to think about how these ideas continue to define Scotland today. National Museums Scotland has partnered with Sabhal Mòr Ostaig College on Skye (UHI), on the production of content for the exhibition. Gaelic language and culture feature throughout the exhibition, including Gaelic. Each section of the exhibition includes exploration of themes from a Gaelic-cultural perspective, and through other perspectives, including Gaelic voices, on some contested historical themes about the period. The relationship between these themes is shown through a rich selection of material.

Citations: -

### Items:

THUMBNAIL	TITLE	DATE UPLOADED
	3e31f8c5-a76c-4987-af84-e621c74ca713_p1f1056019.jpg	2021-12-08



# NHS pilot repository project

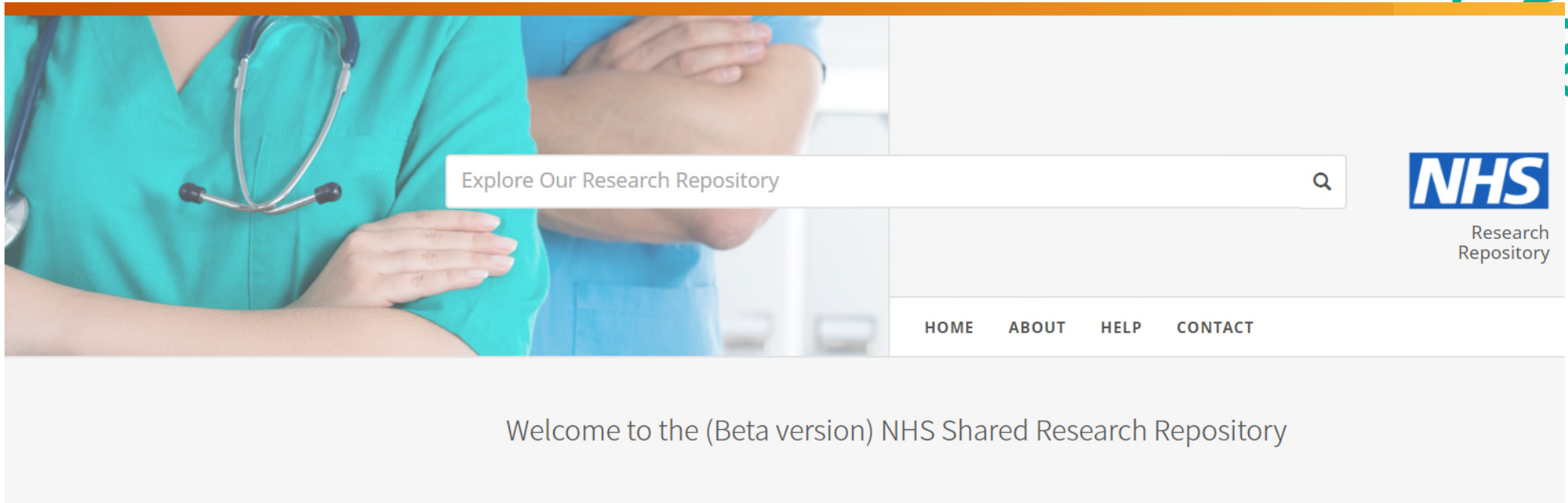
Jun 2021 – May 2022

Pilot partners:

- Barts Health NHS Trust
- Black Country Health Libraries Consortium
- Birmingham and Solihull Mental Health NHS Foundation Trust
- Gloucestershire Hospitals NHS Foundation Trust
- Norfolk and Waveney Integrated Care System
- Somerset NHS Foundation Trust



# Shared NHS Open Access repository



<https://nhs.iro.bl.uk>

# NHS pilot shared repository

## Repository features:

- A single repository shared by all six pilot NHS Trusts
- Content is visible & editable by all admins
- Not part of the cultural heritage shared search

## Service features:

- All depositing into a shared space – workflows and content policies are key
- NHS is the strongest identity – a single shop window on ‘all’ publications
- Governance is key
- Pilot project will assess feasibility
- Partners benefit from British Library repository and content expertise

# A repository 'collection' for each partner



Barts Health NHS Trust



Birmingham and Solihull Mental Health NHS Foundation Trust



Black Country Health Libraries Consortium



Gloucestershire Hospitals NHS Foundation Trust



Norfolk and Waveney Strategic Transformation Partnership



Somerset NHS Foundation Trust



# Repositories are hosted & managed by the British Library

British Library repository services:  
a single platform for multiple repositories

Cultural heritage shared repository

British Library

National Museums Scotland

Museum of London Archaeology

Tate galleries

Royal Botanic Gardens Kew

British Museum


NHS shared repository

*6 NHS organisations sharing one repository*

# AHRC national infrastructure


[Home](#) > [Blog](#) > Arts and humanities infrastructure enabling knowledge with impact

## Arts and humanities infrastructure enabling knowledge with impact



**Subscribe to UKRI emails**

Sign up for news, views and funding alerts.

 **Tao Chang**  
Head of Infrastructure, Arts and Humanities Research Council

1 September 2021

Arts and humanities infrastructures are vital for driving innovation in heritage science, and ensuring the creative industries thrive.

On 12 September, Arts and Humanities Research Council's (AHRC) Infrastructure team will officially be two years old. A second birthday, or near enough, seems as good a

# Standard partnership model includes

- A named BL account manager with 5 days per year of dedicated staff time
- One client meeting and two community meetings per year
- Option to contribute to the prioritisation of new feature requests
- Defined Service Level Agreements with out of hours support
- Monthly usage reports for both individual and shared repositories
- 2TB storage and 500GB/month bandwidth included
- Optional repository-only DataCite service included at no charge
- No exit charge, we will export the content if partners want to leave

# Wider goals

- Ensure there is ongoing investment in open source repository technologies
- Create a community that can shape and influence the development of Hyku
- Share best practice and work together to advance open access
- Help cultural organisations and ideally those who aren't well funded to make their content openly accessible



[openaccess@bl.uk](mailto:openaccess@bl.uk)

**Thank  
you**

BRITISH  
LIBRARY